

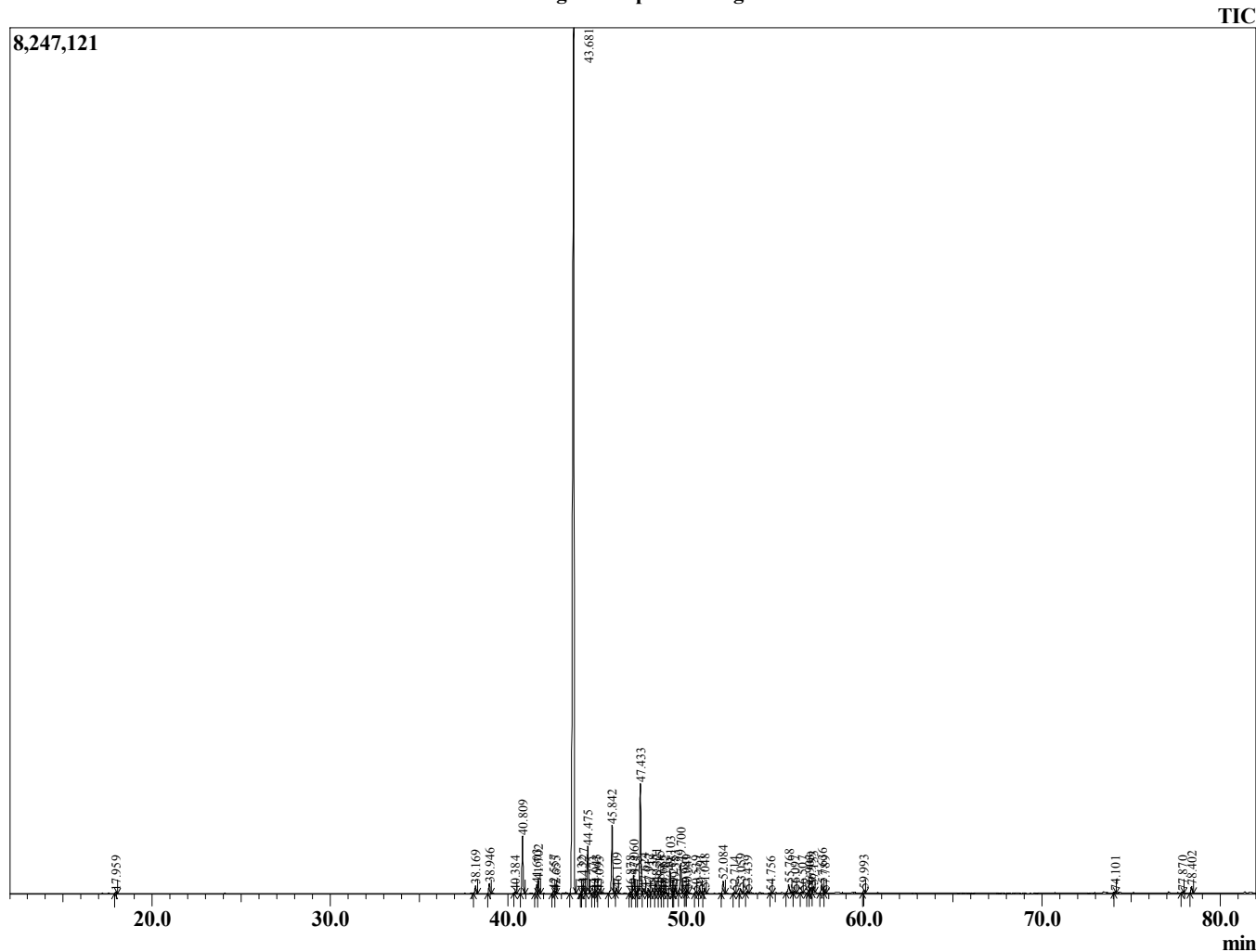
Sample Information

Analyzed : 7/1/2019 6:01:53 PM
 Sample Type : Essential Oil
 Sample Name : *Copaifera langsdorffii*
 Injection Volume : 0.10

Copaiba
 SMN4-NW
 South America



Chromatogram *Copaifera langsdorffii*



R.Time	Name	Area%
17.959	cis-beta-Ocimene	0.07
38.169	delta-Elemene	0.46
38.946	alpha-Cubebene	0.61
40.384	alpha-Ylangene	0.07
40.809	alpha-Copaene	3.41
41.603	beta-Cubebene	0.51
41.702	beta-Elemene	0.79
42.557	Cyperene	0.18
42.655	cis-beta-Caryophyllene	0.10
43.681	beta-Caryophyllene	65.18
44.132	Unidentified	0.04
44.227	gamma-Elemene	0.59
44.475	trans-alpha-Bergamotene	2.82
44.773	Aromadendrene	0.06
44.943	trans-beta-Farnesene	0.18
45.093	Unidentified	0.07
45.842	alpha-Humulene	4.22
46.109	Alloaromadendrene	0.22
46.878	10-beta-H-Cadina-1(6),4-diene	0.11
47.060	trans-Cadina-1(6),4-diene	1.19
47.255	Unidentified	0.08
47.433	Germacrene D	6.87
47.624	Farnesene isomer	0.30
47.912	beta-Selinene	0.24
48.138	trans-Murrola-4(14),5-diene	0.30
48.321	Bicyclogermacrene	0.71
48.515	alpha-Murolene	0.41
48.665	cis-alpha-Bisabolene	0.13
48.782	delta-Amorphene	0.09
49.103	beta-Bisabolene	1.39
49.275	Unidentified	0.11
49.383	gamma-Cadinene	0.48
49.700	delta-Cadinene	1.89
49.981	Zonarene	0.06
50.049	beta-Sesquiphellandrene	0.18
50.539	trans-Cadina-1,4-diene	0.10
50.791	alpha-Cadinene	0.15
51.048	trans-alpha-Bisabolene	0.25
52.084	Germacrene B	0.76
52.714	Unidentified	0.08
53.059	Caryophyllene alcohol	0.28
53.439	Caryophyllene oxide	0.13
54.756	Ledol	0.05
55.768	Humulane-1,6-dien-3-ol	0.69
56.097	1-epi-Cubanol	0.09
56.507	Unidentified	0.09
56.903	alpha-Murolol (=Torreyol)	0.17
56.999	epi-alpha-Cadinol	0.36
57.153	delta-Cadinol	0.37
57.636	alpha-Cadinol	0.65
57.789	Unidentified	0.08
59.993	Juniper camphor	0.19
74.101	Unidentified	0.08
77.870	Manool	0.08
78.402	Kolavelool	0.39
84.321	Unidentified	0.08

R.Time	Name	Area%
90.118	Copalic acid	0.46
90.725	Unidentified	0.06
93.707	Unidentified	0.08
96.123	Unidentified	0.13
		100.00